

Alternative Land & Forest Technologies Bull Hog Eats Brush, Trees, Stumps and More . . .

Grinds to Mulch - No Need to Burn - Nothing to Cart Away

IDEAL FOR:

FIRE PREVENTION:
clears around buildings,
creates fire breaks

EROSION CONTROL:
grinds down to ground
level preserving the
roots & providing mulch

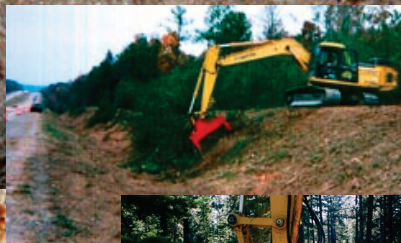
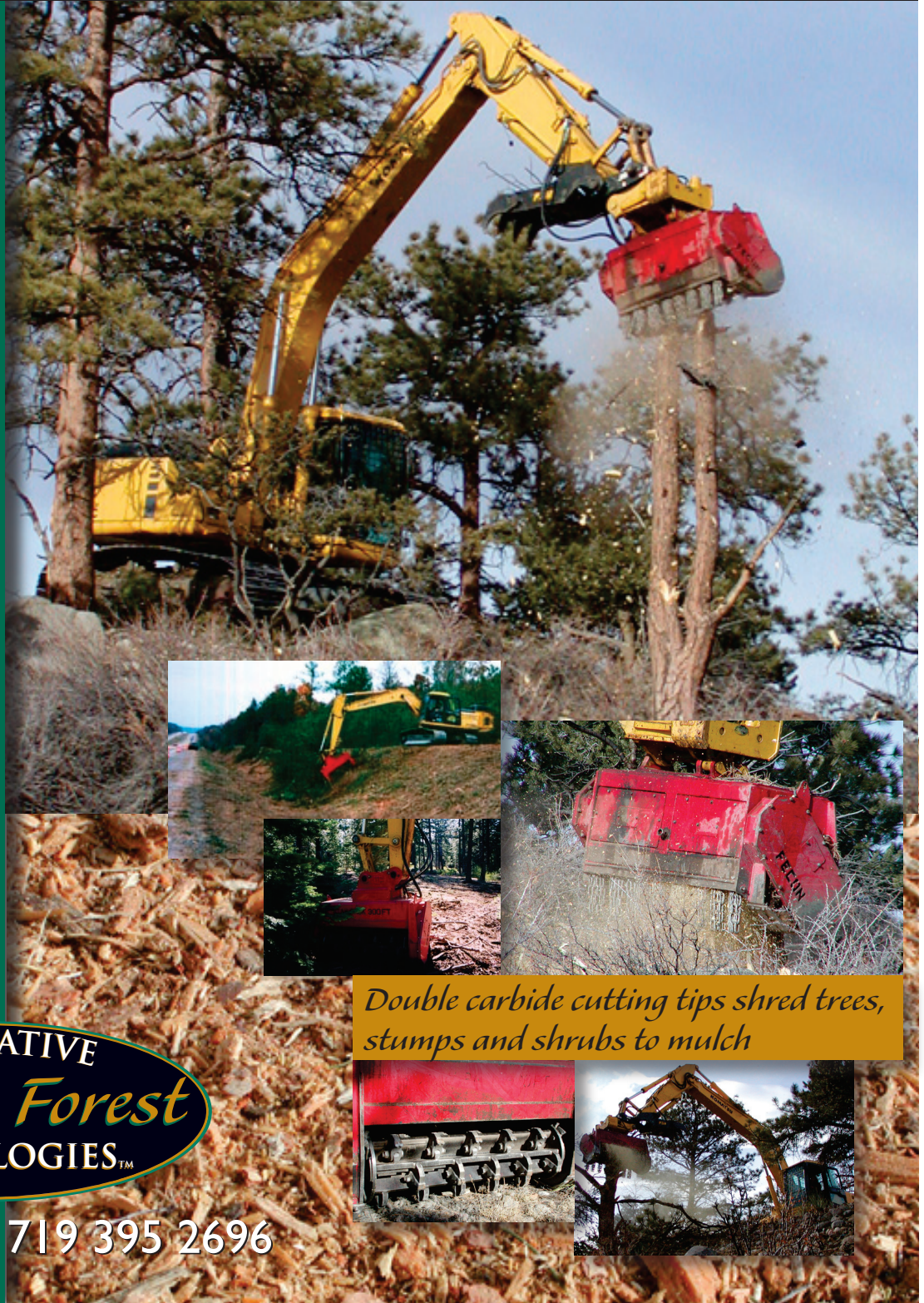
**BETTER KILL
REMOVAL**

**FOREST
THINNING**

BRUSH REMOVAL

**DEAD WOOD
REMOVAL**

**ENVIRONMENTALLY
FRIENDLY**



Double carbide cutting tips shred trees, stumps and shrubs to mulch



www.landforest.com 719 395 2696

QUICKLY & EASILY REMOVES:

- Brush & Bushes
- Trees, Tree Stumps, & More!

Grinds down to the roots and creates mulch. ALTERNATIVE *Land & Forest* TECHNOLOGIES™ reduces brush, slash piles and trees quickly, safely and at the lowest possible cost. Grinds trees from the top down to the stump in minutes. ***Clears areas in half the time!*** Grinds down to a fine mulch so that there is no need to haul away or burn cleared debris.

ENVIRONMENTAL SOLUTIONS:

Because the Bull Hog is mounted on our Komatsu excavator with a zero tail spin we can enter a forested area and select only the trees needing to be thinned. The roots of the surrounding trees are not disturbed. The mulch from the ground trees, or bushes puts nutrient back into the soil and provides an

effective solution for erosion control. We offer an environmental friendly solution to land clearing, forestry thinning and erosion control.



secure. The mulch is also effective erosion control in disturbed soils.

FIRE PREVENTION:

We offer quick, easy and cost effective methodologies to implement your fire prevention plan including creating defensible space plans and offering wildfire mitigation thinning. "Defensible space is an area around a structure where fuels and vegetation are treated, cleared or reduced to slow the spread of wildfire towards the structure. It also reduces that chance of a structure fire moving from one building to the surrounding forest. Defensible space provides room for firefighters to do their job. Your house (or business) is more likely to withstand a wildfire if grasses, brush, trees and other common forest fuels are managed to reduce a fire's intensity."



Colorado State University Cooperative Extension,
Natural Resources Series, "Creating Wildfire-Defensible Zones"
no. 6.302 by F.C. Dennis

*Call today to schedule an appointment,
see a free demonstration or request
a demo video in CD-ROM format*

COMMONLY USED FOR:

- Creating Fire Breaks
- Offering Fuel Reduction Areas
- Creating Flood Control Channels
- Wildland & Urban Interface Projects
- Forest Road Maintenance
- Park Path Development
- Land Reclamation
- Stump Removal
- Forestry Projects



A DIVISION OF AQUATIC ALTERNATIVES®

PO Box 160 - Nathrop, CO 81236

www.landforest.com - 719-395-2696