



3220 Commander Drive, # 101
 Carrollton, TX 75006
 Fax: 972-980-0375
 Phone: 800-995-1014
sales@excelmeridian.com
www.excelmeridian.com

Your Total Storage Solutions Provider

When it comes to storage the options are vast. Most every storage problem has multiple solutions. At Excel Meridian Data, we will show you several options to meet the demands of your applications, environment, performance and budget.

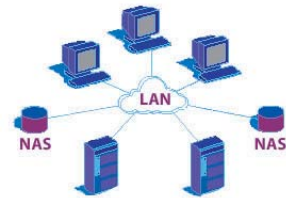
We will devote the personal attention you require to find the best solution, and feel confident about your purchase. Our highly experienced sales and support team is committed to your total satisfaction as our customer.

Excel Meridian Data, Inc. offers a full-line of products to fit your needs. Choose **Network Attached Storage** solutions such as our NetStor WSS or DataNAS for stand-alone storage that operates independently of your current application or file servers. We have multiple NAS solutions that are specifically designed for workgroup, departmental and enterprise class requirements.

Or select one of our **Direct Attached Storage** solutions within the SecurStor line which balances performance, reliability and price. Products range from workgroup to enterprise including solutions for the most demanding mission critical applications or clusters. Even grow your existing **Storage Area Network**, or create a new one, with products like our SecurStor 12i IP SAN.



Choose our **CD/DVD sharing solutions** when you need to share one, dozens or even hundreds of CD/DVD discs from a centralized point. Our solutions also offer powerful and flexible data archiving capabilities unique to the market. Our streamlined administration approach turns what could otherwise be a daunting task into an incredibly simple one.



Network Attached Storage

NAS

Direct Attached Storage (DAS)

RAID

Network Attached Optical CD/DVD Servers

CD/DVD

UNMATCHED

Flexibility • Performance • Value



2U Header

NetStor WSS

NetStor WSS is the most configurable, most powerful product in the Excel Meridian Data storage lineup. From its inception it was designed to meet your exact needs. No cookie-cutter "take it or leave it" forced configurations, and no compromising on features, performance,

or reliability. And if you think that means we must be more expensive . . . think again. In fact, we guarantee the best value and return on investment available anywhere.

Setting the standard for network attached storage, the **NetStor WSS** is powered by Microsoft Windows Storage Server 2003 which is then customized by the Excel Meridian Data engineering team to bring our years of expertise to your fingertips. The end result: a highly scalable, reliable performer with all the features our customers have asked us for, all in one package.



1U Header

NAS Header: It all starts with the **NetStor WSS** NAS "Header". The core of the solution is contained here, controlling all data in and out of the server and housing the **NetStor WSS** operating system. There are three base models to choose from and find the best match for your needs. All models feature available Dual Intel Xeon 3.0GHz EM64T CPU's with an 800MHz FSB and 4GB of DDR2 PC-4200 ECC Registered memory. That's fast! The header also holds the 15,000rpm Ultra320 SCSI or 10,000rpm SATA-150 hard disk drives in a Hardware RAID 1 configuration, keeping the operating system safe. Dual GigE (100/1000Mb) Ethernet interfaces are standard, and you can bet there are enough options to satisfy your every want.



SecurStor XRS family

Storage Arrays: All of Excel Meridian's **SecurStor** RAID storage arrays have been certified to work with the **NetStor WSS** NAS header, and the sky's the limit. Capacity is scalable to 128TB per NAS and you can choose any of our **SecurStor** RAID array types to best meet your specific application needs.

For example, connect the powerful **SecurStor XRS** and enjoy the benefits of a **RAID 6** XRS protected array that RAID 5 just can't match. Or add the **SecurStor 2500** and have at your disposal a no single point of failure "active/active" array that you, your users, and most importantly your boss, can all count on. You'll be a hero!

Additional storage connectivity options include iSCSI, Serial ATA-150 and Serial ATA-300, Ultra320 SCSI, and 2Gb Fibre Channel-based RAID Arrays (see **SecurStor 12i**). You can even connect to an existing SAN for the ultimate in storage virtualization (Block-level to File-level conversion).



SecurStor 12i IP SAN



SecurStor SATA family

Summary of the features: (for more details see datasheet)

- Sets the standards when it comes to interoperability and compatibility.
- Proven third generation "built-for-NAS" kernel and core technology.
- Microsoft Windows Active Directory (2000 and 2003) certified.
- Unix/Linux NIS, Apple Macintosh, and Novell NetWare NDS user synchronization.
- Distributed File System (DFS) and File Replication Services (FRS) certified.
- Snapshot Volume Shadow Copy (VSS) journaling file system.
- Single Volume can be up to 64 TB in capacity with a single namespace.
- Emergency OS fail-over tools and built-in disaster recovery "bare metal" recovery.
- Advanced real-time Storage Management with detailed reports on types of files stored.
- Anti-virus engine (ICSA certified) with event notification and auto-updates.
- Scalable capacity: Up to 128 TB per NAS using iSCSI, SATA, FC or SCSI arrays.
- Local tape library or single-drive support (direct attached or SAN accessible).
- No client access licenses required - no concurrent user connection limitations.
- Headless design: no need for keyboard, mouse, or monitor.
- Easy-to-use secure web interface for routine administration (via Ethernet).
- Disaster Recovery/Backup: Over-the-wire support for Veritas, Legato, CA/BrightStor, BakBone and Microsoft.

We mentioned up above that you'll be a hero after making the decision to buy **NetStor WSS**. And we'll keep your hero status since every solution we sell is built with our many years of network storage experience and is also guaranteed by our **30-day money back policy**. Plus, for those who'd rather try before you buy, we also offer hassle-free evaluation units for qualified customers.

Each **NetStor WSS** is backed by our **On-site Next Business Day parts replacement service** and our Unlimited toll-free technical support assistance, with no pesky per-incident fees.



DataNAS family

DataNAS Director

This top of the line NAS filer in the DataNAS family can function as a stand-alone NAS filer with up-to 3.2 TB capacity per unit, or it can become a NAS header/gateway for up-to 22 TB capacity total by attaching up-to 10 additional NAS RAID add-on volumes to the header. This unique feature is called **Smart Extend** and is based on iSCSI storage over IP technology.

- 500 GB to 22 TB capacity scalable on-the-fly using iSCSI based technology
- Configurable from 512 MB to 2 GB DDR memory
- Serial ATA drives, hot-swappable with intelligent disk backplane module
- RAID 0, 1 or 5 with global hot spare option
- Windows, Unix/Linux, Macintosh, and NetWare support
- Dual Gigabit Ethernet
- Real-time Anti-virus scanning w/free pattern updates for life
- Snapshot file system
- Supports locally attached SCSI tape library devices
- DVD-RW/CD-RW archiving
- Tapeless backup / disk-to-disk backup
- File Server replacement

As reviewed in

Network Computing

Open ended solutions with scalable capacity



Built with **WD**
ENTERPRISE
RAID Edition Drives

DataNAS XP

- From 240 GB to 2 TB Capacity (dynamically scalable using RAID 5)
- IDE/ATA drives, hot-swappable with intelligent disk backplane module
- Supports RAID 0, 1, 5 with global hot spare option
- Up-to 4 RAID sets and RAID 5 expansion
- SmartSync file replication and data synchronization built-in with no extra software required
- Supports Windows, Unix/Linux, and Macintosh networks
- Easy to use web interface
- NAS-to-NAS file replication
- Local or remote tape backup or CD/DVD-RW backup
- Native Windows security
- Dual Gigabit Ethernet with failover / load balancing
- Included Anti-virus protection
- SCSI tape drive support



A subsidiary of Alanco Technologies, Inc.

www.excelmeridian.com

Updated 6/1/2005

3220 Commander Dr., # 101, Carrollton, TX 75006

Fax: 972-980-0375

Phone: **800-995-1014**

sales@excelmeridian.com

SecurStor XRS Series

Powerful. Versatile. Dependable. and Affordable.



3U 16-bay chassis

SecurStor XRS is everything you need to be proclaimed a hero within your organization! With class leading performance, a broad range of customizable configuration options and our advanced **RAID 6** controller engine that virtually eliminates data loss – there is no better choice in or near its price class.

Each model within the **SecurStor XRS** series is equipped with a powerful RAID hardware controller, hot-swap redundant power supplies, cooling modules, and Serial ATA hard disk drives. Choose from either Dual Ultra320 SCSI interfaces or Dual 2Gb Fibre Channel interfaces. Either way, connectivity to your servers directly or by way of a SAN is seamless.

SecurStor XRS combines the low cost of Serial ATA hard drives with the high reliability of our RAID server to form the perfect balance.

Utilizing our powerful RAID engine you'll benefit from several advanced features such as: online capacity expansion, RAID level and stripe size migration, and multiple concurrent arrays per physical hard disk. Local or remote management can be performed with ease with either the LCD keypad or the Ethernet port to access a powerful web based interface (does not require a plug-in or software installation). Event notification and system health services run independently on the XRS RAID controller and can automatically send various levels of alerts by email, pager, or trap.



2U 12-bay chassis



2U 8-bay chassis



RAID 6:

The XRS (eXtra Raid Security) is a result of RAID 6 technology, a system that improves upon RAID 5 by allowing two active (non-spare) hard drives to fail in the array before the array fails.

RAID 6 requires dual parity calculation and generation, a very intensive process – a task the **SecurStor XRS** handles with ease. Studies show our RAID 6 implementation performs similarly or even outperforms the competitions RAID 5 configurations. See diagram.

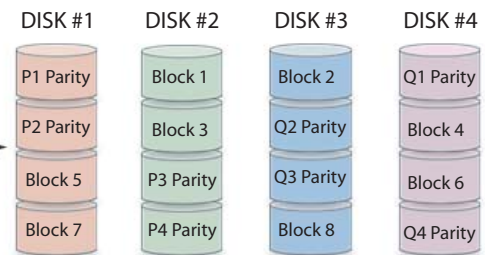
Key Features:

- Up-to 4.8TB in a 2U or 6.4TB in a 3U
- Unique RAID 6 capability virtually eliminates data loss due to drive failures
- Full featured RAID functionality, supporting RAID levels 0, 1, (0+1), 3, 5, 6 and JBOD
- Dual Ultra320 SCSI or Dual 2Gb Fibre Channel host interface channels
- Integrated RAID management software intelligently keeps you informed on critical system events by email (SMTP), pager (SMTP), or traps (SNMP)
- Cluster capable
- Multiple concurrent arrays supported with separate RAID levels on each array
- Hot swappable power, cooling fans and hard disk drives for highest level of uptime
- Automatic failover to hot-spare and automatic rebuild of array
- Drive roaming
- Redundant firmware image stored in protected memory
- Online Capacity Expansion (OCE) by adding new disks to an array, or replacing existing disks with larger capacity models
- RAID level and stripe size migration (on-the-fly)
- Multiple arrays can co-exist on a single physical disk, maximizing storage efficiency
- Deploy as Direct Attached Storage (DAS) or add to Storage Area Network (SAN)

DATA:



DISK DRIVES:



Striped Data with Distributed Double Parity

Built with **ENTERPRISE RAID Edition Drives**



SecurStor 12i IP SAN

DAS/SAN over Ethernet

SecurStor 12i utilizes the latest in IP SAN technology which allows you to quickly deploy, manage and access your storage from anywhere on the network. Connectivity is as easy as attaching a standard Ethernet Network cable since the **SecurStor 12i** utilizes the latest iSCSI technology to form a Storage Area Network (SAN) over Ethernet, as opposed to much more costly Fibre Channel.



The resulting accessibility is outstanding: any server within your enterprise can access the storage by means of an industry standard iSCSI driver which is available for most platforms, including Microsoft Windows, most Unix/Linux variants, Novell NetWare and Mac OS X.

Performance is excellent over iSCSI Ethernet: dual Gigabit Ethernet ports provide ample bandwidth for most applications, and performance can be scaled up easily by adding additional **SecurStor 12i** RAID systems to your network.

The **SecurStor 12i** is presented to your servers as a SCSI device so advanced features such as Snapshot, Data Replication, Cluster/Failover and Remote Backup/Disaster Recovery can all be deployed easily using native operating system toolsets. Multiple servers can be connected concurrently making the **SecurStor 12i** IP SAN solution ideal for Disaster Recovery and Enterprise Backup applications.

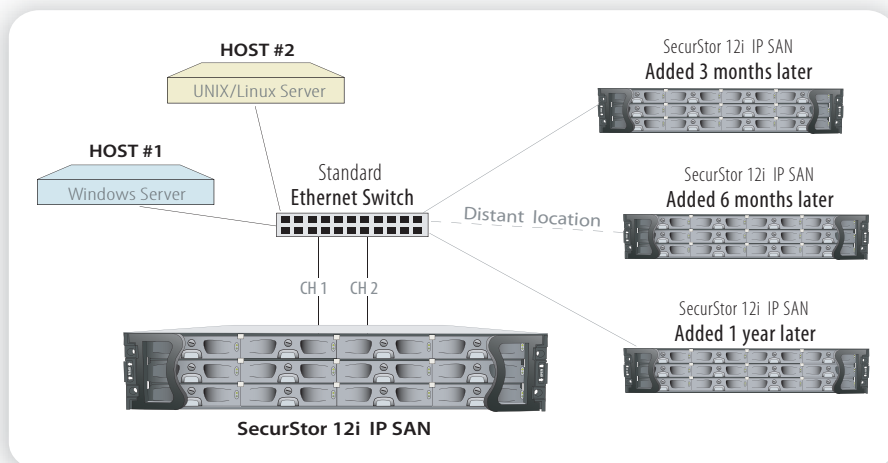
Storage is easily scalable by adding additional servers to your network – no daisy chaining is required, so the utmost performance is maintained while you scale to limitless capacity (4.8TB per 2U server). You have many choices on how the storage is presented to your hosts, including an option for your application to use a distributed file system that spans multiple **SecurStor 12i** iSCSI IP SAN servers but is accessible as a single drive letter or mount point on your host(s).

Built with 
ENTERPRISE
RAID Edition Drives



Key Features:

- IP Storage Area Network (SAN) over Ethernet for highest connectivity not limited by distance.
- Aggregate or Distributed file system schemes to best suit your needs.
- Capacity starting at 160 GB and scalable up-to any desired capacity (Density: 4.8 TB per 2U).
- Full featured RAID functionality:
RAID 0, 1, (0+1), 3, 5, 10, 30, 50, NRAID and JBOD.
- Advanced Data Management:
Data migration and detection of drive failures.
- Integrated RAIDWatch management software intelligently keeps you informed of critical system events by email (SMTP) or traps (SNMP) and additionally provides a web browser based easy-to-use GUI compatible with any operating system platform.
- Wide range of Operating System support:
Windows XP, 2000, 2003, Solaris 9, Red Hat ES 3, SuSE Enterprise 8, Mac OS X and Novell 6.x



Flexible expansion for massive-capacity (add capacity as you grow)
Multi-server/multi-platform connection



SecurStor SATA Series



Built with **WD**
ENTERPRISE
RAID Edition Drives

The **SecurStor SATA** subsystems combines either Ultra320 SCSI or 2 Gbps Fibre Channel host channels with serial ATA (SATA) drives in a single storage subsystem. This provides users with massive storage capacity in a secure subsystem environment where a high level of data availability is assured.

Not only does the **SecurStor SATA** subsystems come with fully featured RAID capabilities but special care has also been taken to ensure that all possible causes of data loss have been eliminated. All of the critical components within the subsystems, including the power supply units and the cooling fans, come in redundant pairs and are hot-swappable.

Utilizing the latest RAID processing technology and newest high-performance Serial ATA (SATA) disk, the sustained throughputs for **SecurStor SATA** models are as follow: *(Please note: These numbers are what we feel is a "real world" representation, not the theoretical maximum some other manufacturers claim.)*

- **16SATA** SATA-to-SCSI models are capable of delivering up to 110 MB/sec sustained throughput, and the **16SATA-FC** SATA-to-FC (single controller) model is capable of delivering up to 120 MB/sec sustained throughput.
- **12SATA** SATA-to-SCSI model is capable of delivering 90-110 MB/sec sustained throughput and the **12SATA-FC** SATA-to-FC (single controller) model is capable of delivering 110-120 MB/sec sustained throughput.
- **8SATA** SATA-to-SCSI model is capable of delivering 70-90 MB/sec sustained throughput.



Key Features:

- Highest storage density with 8 or 12 drives in 2U space and 16 drives in 3U space. Scalable 160GB to 6.4TB
- Full featured RAID functionality, supporting RAID levels 0, 1 (0+1), 3, 5, 10, 30, 50, NRAID, and JBOD
- Two Ultra320 SCSI Host channels or Two 2Gbps Fibre Channel Host/Switch channels (12SATA FC/16SATA FC only)
- Cluster capable
- Multiple array configurations with different RAID levels, optimized on a per array basis
- Auto detection, auto rebuild, hot spare, and hot-swap capability
- Supports up to 1024 LUNs for host mapping on Fibre Channel models
- Intelligent Drive Handling for managing bad blocks during rebuild and the manual Media Scan function for data protection
- Integrated **RAIDWatch** management software intelligently keeps you informed on critical system events by email (SMTP) or traps (SNMP) and additionally provides a web browser based easy-to-use GUI compatible with any operating system platform



Swing away handle with LCD display

SecurStor 16SATA FC-R Enterprise

Designed for mission critical or ultra high performance applications



SecurStor 16SATA FC-R is perfect for the organization requiring no sacrifice in terms of performance, reliability, or features, while maintaining the lowest possible cost. Architected with hot-swap and dual redundant RAID controllers, hard drives, power supplies, cooling modules, and drive/host paths, you can rest easy knowing your data will always be available.

- Key Features:**
- Scalable from 160GB to 32TB
 - Many-host capable via FC switch
 - Serial ATA 1.5Gbps drive interface
 - Cluster capable
 - RAID slicing and partitioning
 - RAID levels 0, 1, 0+1, 3, 5, 10, 30 & 50
 - **RAIDWatch** remote administration and event notification by web, email, or trap
 - Density: 6.4TB/3U
 - 2Gb Fibre Channel host interface
 - No single point of failure redundancy
 - Dynamic RAID expansion
 - Multiple concurrent RAID arrays supported
 - FC-AL, Point-to-Point or Switched Fabric connectivity

Built with **WD**
ENTERPRISE
RAID Edition Drives



TravelStor 5

120 GB to 1.25 TB capacity with (5) IDE/ATA hard disk drives

This is a lightweight RAID storage solution, designed with portability in mind and/or for very small businesses that do not need many features or a lot of power/performance.



Models available:

TravelStor 5S: Ultra160 SCSI with standard HD68 connection to host

TravelStor 5UF: USB 2.0, backwards compatible with 1.1 or 1.0, for connection to host or Firewire 1394b for connection to host. User selectable between USB and Firewire.

Key Features:

- Lightweight, user-friendly interface. 12 lbs without disk drives, under 20 lbs fully populated
- (5) IDE/ATA hard drive hot-swappable bays, capacity up-to 1.25TB
- RAID 0, 0+1, 1, 3 or 5. JBOD and NRAID supported
- RAID 5 dynamic expansion on-line for adding capacity at a later date
- Front LCD keypad for quick configuration changes/event monitoring
- RAID management via standard web browser for ease of use
- Each drive bay has activity and fault LED's for event monitoring or troubleshooting
- 64 MB ECC cache memory

TravelStor 8C

Serial ATA (SATA) RAID to Ultra320 SCSI

Features high performance Ultra320 SCSI host connectivity, an industry standard, so you may attach it directly to your file server or workstation.

Powered by low cost yet high performance Serial ATA hard drives, the **TravelStor 8C** is a perfect fit for small businesses or light-duty applications that require RAID data protection.

Designed with hot-swappable power supplies, hard drives, and a reliable RAID controller.



Key Features:

- Budget minded performer
- Full featured RAID functionality, supporting RAID levels 0, 1 (0+1), 3, 5, 10, 30, 50, NRAID, and JBOD
- Two Ultra320 SCSI host channels
- Multiple array configurations with different RAID levels, optimized on a per array basis
- Auto detection, auto rebuild, hot spare, and hot-swap capability
- Integrated RAIDWatch management software intelligently keeps you informed on critical system events by email (SMTP) or traps (SNMP) and additionally provides a web browser based easy-to-use GUI compatible with any operating system platform



Built with **WD**
ENTERPRISE
RAID Edition Drives

SecurStor 2500 Enterprise Fibre to Fibre

360 GB to 64 TB capacity - 2 Gb Fibre Channel, up-to (12) SFP-LC or SFP-HSSDC2 ports

SecurStor 2500 is designed as a high-performance and high-availability solution, with multiple configuration options providing available No Single Point of Failure redundancy for up-to 64 TB of multi-host cluster-capable storage. Plug the **SecurStor 2500** into your existing SAN infrastructure, or directly attach it to one or more servers or fibre channel switches, both with ease.

- Available with single or dual RAID controllers
- No Single Point of Failure redundancy available
- High speed 64-bit RISC CPU on each RAID controller with dual XOR ASIC's
- 1 GB ECC cache memory on each RAID controller with 60-hour battery backup
- Multiple concurrent RAID arrays supported
- Dynamic RAID expansion and RAID slicing or partitioning
- Supports up to 1024 LUNs for host mapping
- FC-AL, Point-to-Point or Switched Fabric connectivity
- Hot-swap redundant: controllers, power supplies, hard drives, SFP I/O modules, NIC modules, and battery backup modules
- Dual-ported HDDs, dual-loop JBOD & host/switch connectivity
- PBC (port by-pass circuitry) embedded, eliminating need for external bypass Hub
- SNMP and SMTP alerts for event notification, web based management
- 160,000 IOPS, 380 MB/sec reads, 200 MB/sec writes with RAID 5



DataShare x2

CD/DVD Disc Management plus Data Storage file sharing

DataShare x2 combines CD/DVD disc management capabilities and powerful Data Storage file sharing in a single easy-to-manage solution. Organize your CD and DVD media into multiple volume groupings for easy management, and share up-to 1500 volumes (discs) to users on the network at once. Off-load your current File Server by storing project data, private home directories, or disk-to-disk backup data sets on **DataShare x2** instead.

CD/DVD Disc Management:

Store an exact replica image of the discs on **DataShare x2**'s available RAID protected hard drives. The discs are on-line all the time for instant access and can be organized into multiple volume groupings. Load new discs via front-mounted CD/DVD loaders, or from your office over the network by using the powerful Remote Load software (included free of charge). Make backup copies or create your own CD/DVD discs easily using the included Disc Creation software (included free of charge). Minimize deployment costs of PC hardware by allowing selected network users to use the **DataShare x2** as a centralized resource for creating or copying discs, instead of each PC being equipped with a DVD-RW recorder. Replace old volumes without resetting share names or volume security and you can keep an archive of all the periodic updates.

Data Storage file sharing:

With easy-to-use management interface choices and RAID protected hard drives that's scalable on-the-fly up-to 2TB in capacity, **DataShare x2** can be utilized as a replacement or a compliment to an existing File Server. Disk-to-disk backup and disaster recovery is managed either using the **DataShare x2**'s built-in SmartSync technology or by using other backup software packages like Veritas Backup Exec.



Key Features:

- Unique single server solution, providing both CD/DVD disc management and network file storage in one solution.
- Store up-to 1500 volumes (CD/DVD discs) on-line simultaneously, and organize them efficiently.
- Available RAID hard disk drive protection for data redundancy, scalable up-to 2 TB in capacity.
- *SmartSync* replication technology built-in to sync data from one **DataShare x2** to another.
- Dual Gigabit Ethernet (10/100/1000mb) interfaces for enhanced performance.
- Disc creation technology built-in with support for CD-R/RW, DVD-R/RW, DVD+R/RW, and the new 8GB Double Layer DVD-RW DL standards.
- Front-mounted LCD keypad for first-time setup (IP address) and health monitoring.
- Disc creation technology built-in with support for CD-R/RW, DVD-R/RW, DVD+R/RW, and the new 8GB Double Layer DVD-RW DL standards.
- Disc Management software package for Windows included free of charge.
- Ability to limit concurrent connections per share to help control licensing restrictions.
- Use as disk-to-disk backup target server to replace slow tape backup servers.
- Trend Micro anti-virus engine built-in and automatic pattern updates are free of charge.

NAS + CD/DVD Solution



NetRom CD/DVD

NetRom CD/DVD subsystem solutions add massive CD/DVD disc sharing and creation capabilities to any server

Each solution is designed to attach to an existing server via the industry standard SCSI interface, so all operating systems and hosts are supported.

With the addition of a **NetRom** subsystem to your server you can access up to (56) CD/DVD discs simultaneously. Also available is the DVD-RW recorder upgrade package which allows you to record/create your own CD and DVD discs, turning each DVD drive into a DVD-RW drive within your subsystem.

Once connected to your host you can easily share out the CD/DVD drives to network users, if needed.

Key Features:

- Provides each network user access to 5, 7, 14 or 56 CD/DVD volumes depending on the configuration
- Compatible with Microsoft Windows, NetWare, Unix/Linux and Macintosh
- Connects directly to the host server via a SCSI controller card(s), sold separately
- Available in 5, 7, or 14-bay tower and in 4U (7-bay) or 42U (56-bay) rackmount

