



PEPCO

Peterson

Electrical Panel

Manufacturing Co.

***Established
1917***

WHO WE ARE

Peterson Electric Panel is a custom switchboard manufacturer, established in 1917. More than 75 years ago, we began manufacturing cut-out boxes and live front switchboards. Since that time, Peterson has continually incorporated the latest technologies to ensure superior quality in the manufacturing of switchboards and panelboards.

Peterson equipment is manufactured to follow specifications of the Underwriters Laboratories (U.L.), and we adhere to NEMA and the National Electrical Code, as well as other prevalent codes.

Peterson's strong emphasis on product quality is supported by a skilled work force. Our employees are members of two unions, the International Brotherhood of Electrical Workers Local 134, Chicago, and Sheet Metal Workers Local 73, Chicago.

WHAT WE DO

- ◆ Switchboards and Panelboards
- ◆ Special Lighting and Power Panels
- ◆ Sub Stations, Indoor and Outdoor to 15,000 Volts
- ◆ Special Enclosures, NEMA-1 through 12 Design
- ◆ Special Service Heads
- ◆ Computer Trough, Chicago and UL Approved
- ◆ Junction Boxes
- ◆ We specialize in retro fits to existing switchboards and special bus bar arrangements
- ◆ We specialize in short time, on time deliveries
- ◆ We deliver with our own lift gate truck

WHO OUR CUSTOMERS ARE

In past years we have serviced many satisfied customers, including:

Commonwealth Edison ◆ Wisconsin Power ◆ Northern Indiana Power

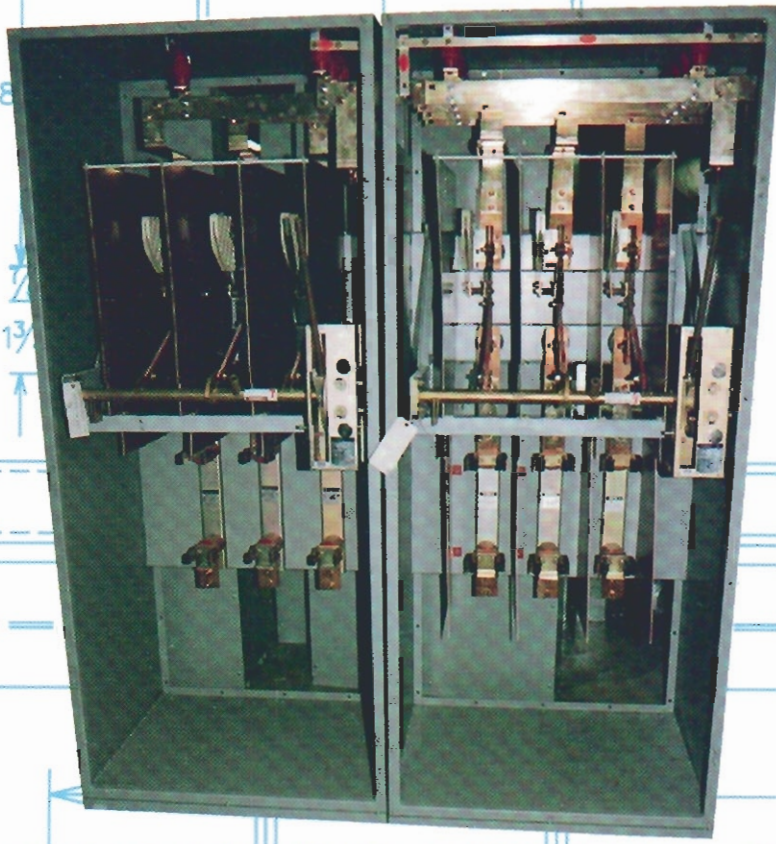
American Electric Power ◆ Baxter Healthcare ◆ Ryerson Steel

Weyerhaeuser ◆ Illinois Masonic Hospital ◆ MacNeal Hospital

Merchandise Mart ◆ Marshall Field's ◆ Eagle Food Stores ◆ University of Chicago

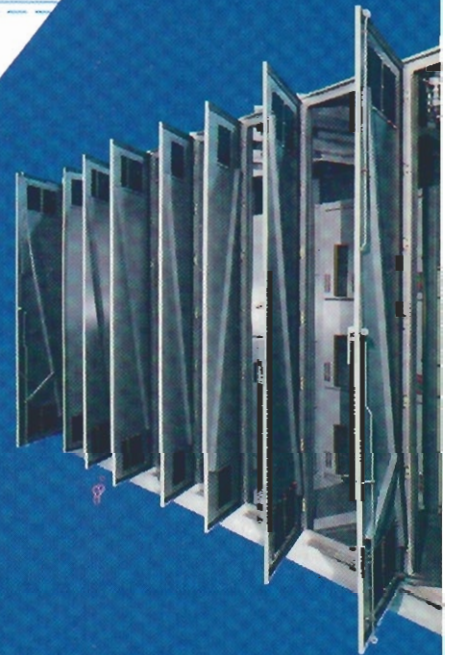
DePaul University ◆ Cook County Hospital ◆ American Stores

(consisting of Jewel Foods, Acme Stores, Star Market, Osco Drugs and Savon Drugs)



*NEMA 1 or 3R, 4160 Volt /600 Amp
fusible load break switches*

PEPCO

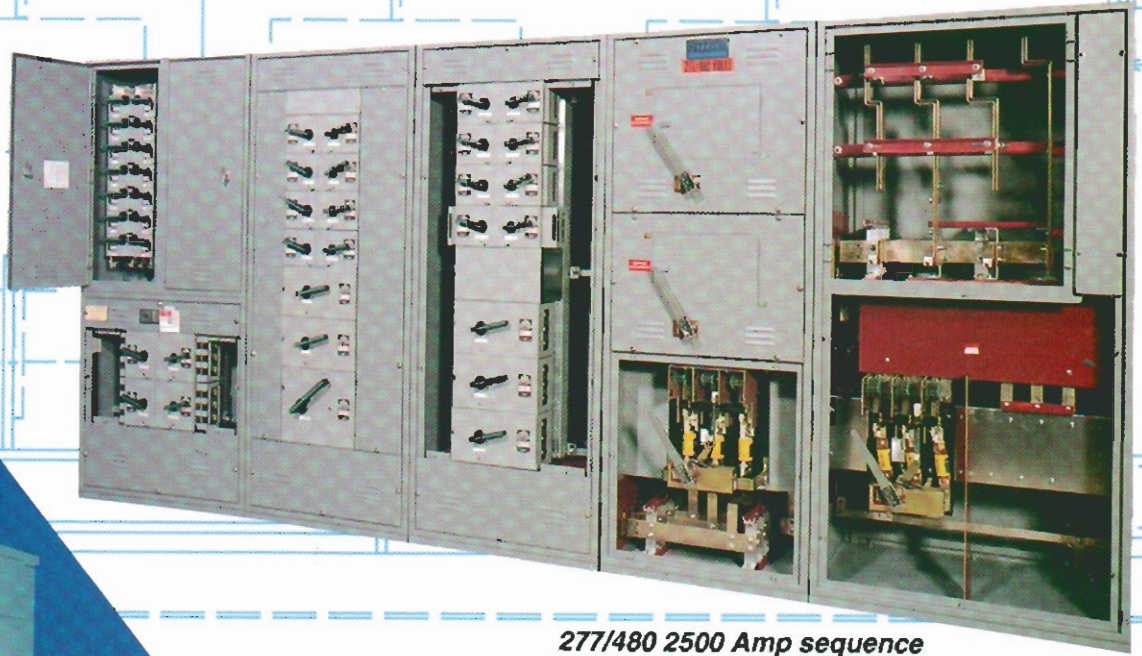
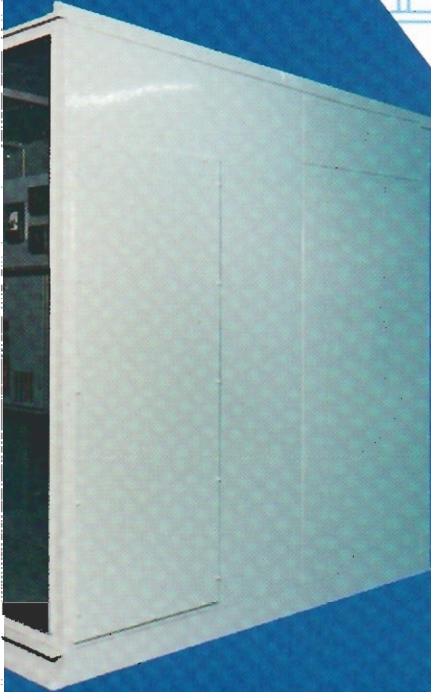


"BOLT SW
1200
PRES

*NEMA 1, 120/240, 4000 Amp, 1 phase
3 wire metering with main switch
and bolted pressure switches*



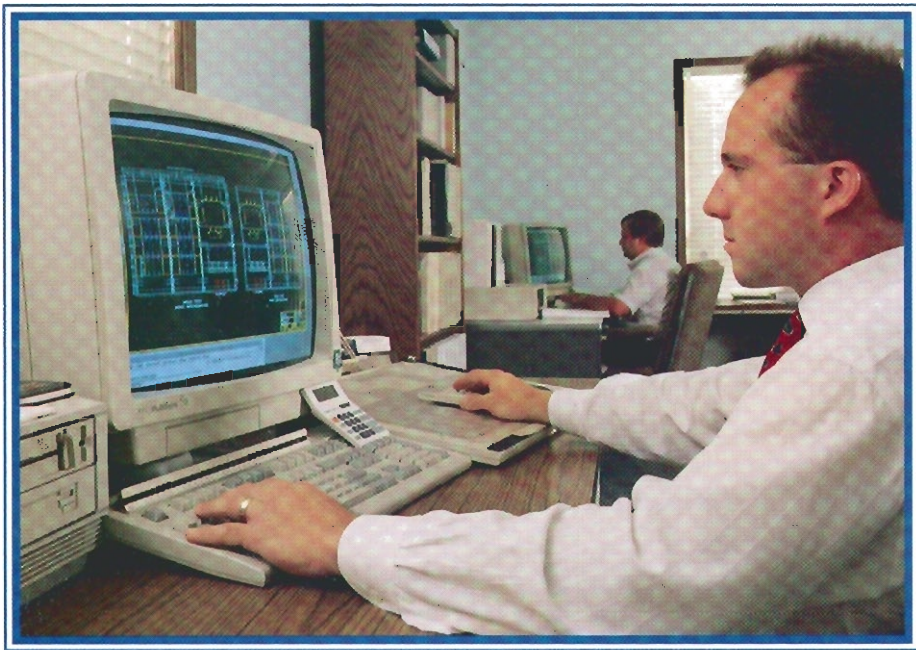
*NEMA-3R, 4000 Amp
walk-in substation with
draw out units*



*277/480 2500 Amp sequence
service and distribution*



*Indoor switchboard with bolted
pressure, vacubreak and draw out
switches*



In order to establish workable layouts to meet our customers' needs, we work closely with a network of engineers, architects and electrical contractors. In addition Peterson employs a full-time engineering staff to operate our modern CAD system.



PEPCO

We carry in our inventory a complete line of Siemens/I.T.E. Vacubreak switches and breakers to allow for fast turnaround as well as for replacement parts. Our stockroom is filled with all the components necessary to build switch gear – steel, copper bus, insulators, bar and angle iron, etc. We also carry a heavy inventory of Bussmann HiCap fuses and smaller Bussmann fuses. Our shop is fully equipped to handle up to 1/4" plate steel.

